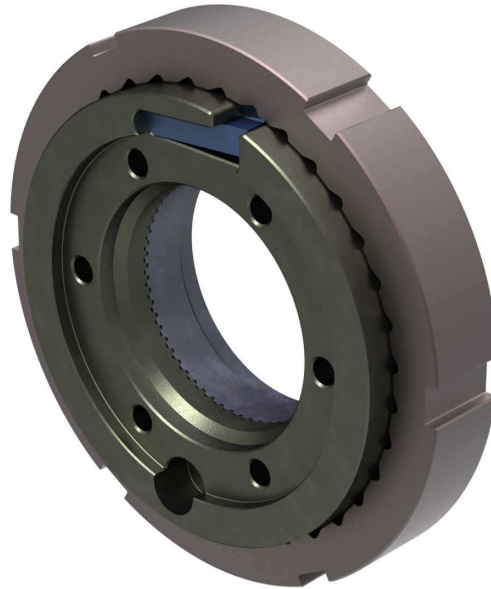


tDock850

QUICK MOUNT SYSTEM



DESCRIPTION

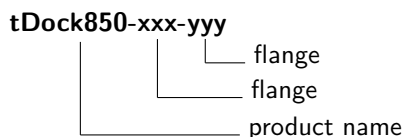
The tDock850 Quick Mount System is used for fast and efficient exchange of shafts and couplings. Using two quick mount systems, you can exchange complete drive trains. The modular design enables the use of all usual test bed flange patterns on both sides of the coupling.

OPERATING RANGE

Torque: up to 2000 Nm
Speed: up to 10000 rpm

NAMING

The product is named according to the following convention:



Example: tDock850-CV10-CV10

BENEFITS

- compact and modular design
- long life
- play-free torque transfer
- fast and easy drive shaft exchange
- fast exchange of the coupling
- fast exchange of the complete drive train

FUNCTION

The quick mount system is opened and locked with the help of a union nut. The longitudinal displacement of the drive train CV-joint allows exchange of the coupling or even the complete drive train without disassembling adjacent components.



Exclusive Representative in Japan

 TOKYO PLANT Co., Ltd.
東京プラント株式会社

515-5 Miyazawa-cho, Akishima city, Tokyo, Japan 196-0024
TEL: +81-42-546-6500 FAX: +81-42-546-6600
Email: sales@tokyo-plant.co.jp

tDock850

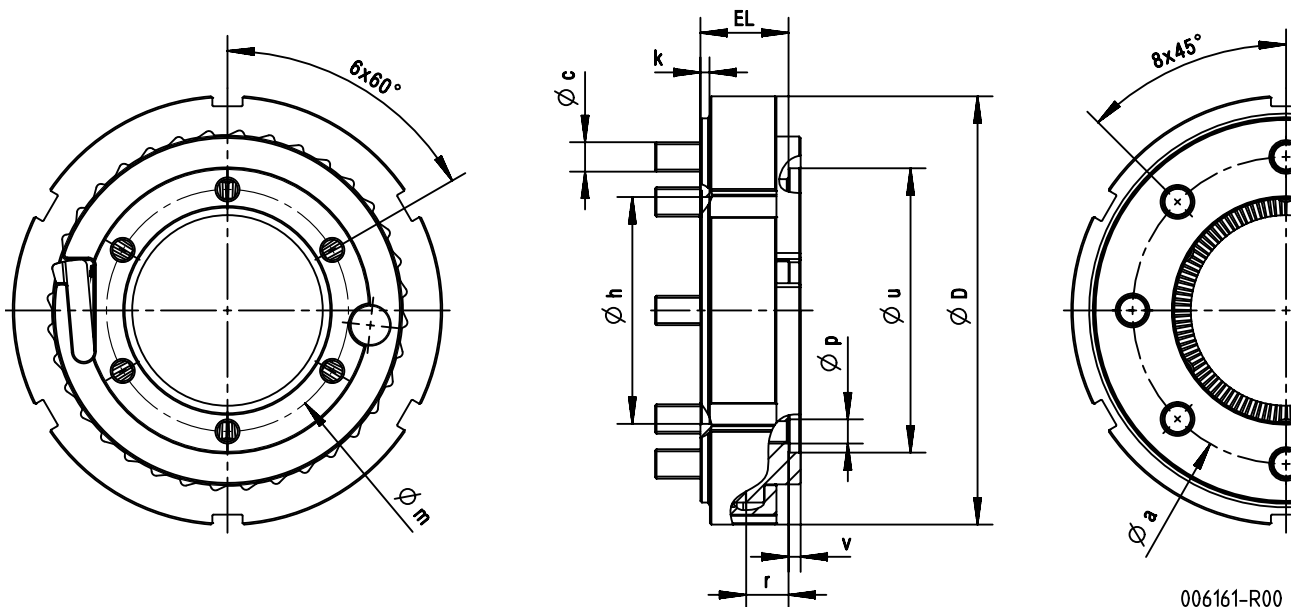
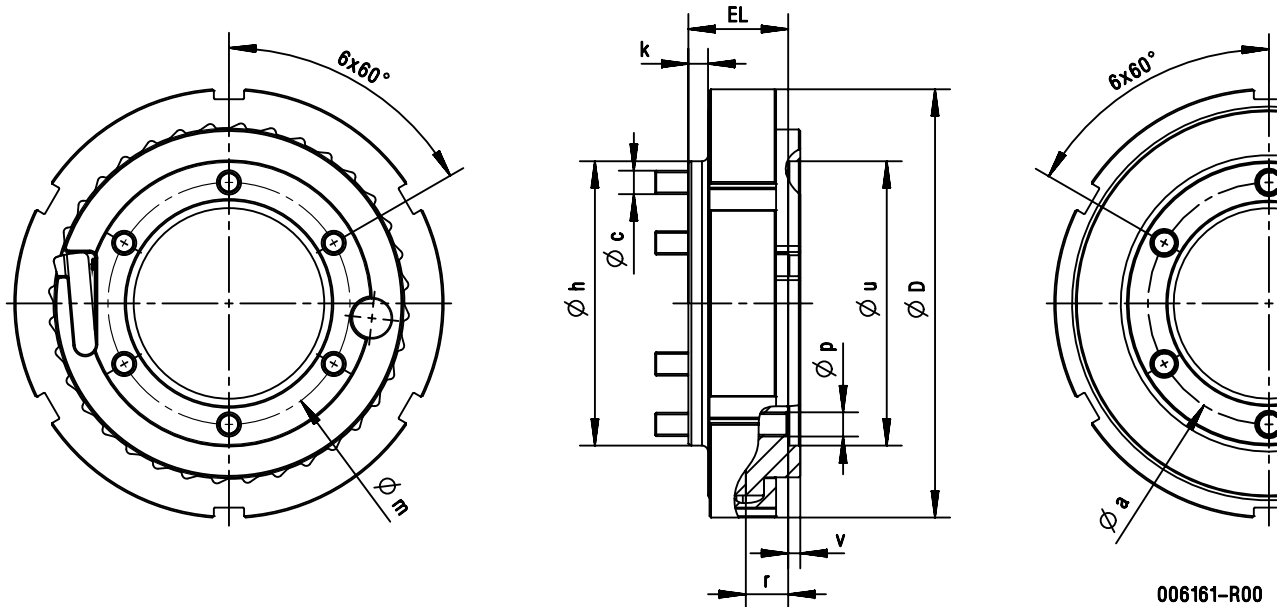
QUICK MOUNT SYSTEM

Docking system	Flange	T_{max} [Nm]	n_{max} [rpm]	m [kg]	J [kgm ²]	ϑ_{min} [°C]	ϑ_{max} [°C]
tDock850	CV10-CV10	2000	10000	2.47	7.1E-3	-40	80
	CV10-TF1K			2.27	6.82E-3		
	CV15-CV15			2.11	6.57E-3		
	CV15-TF1K			2.04	6.42E-3		

T_{max} - Maximum torque
 n_{max} - Maximum speed

m - Mass
 J - Inertia

ϑ_{min} - Minimum operating temperature
 ϑ_{max} - Maximum operating temperature



Docking system	Flange	a [mm]	c [mm]	D [mm]	h [mm]	k [mm]	EL [mm]	m [mm]	p [mm]	r [mm]	u (H6) [mm]	v [mm]
tDock850	CV10-CV10	80	M8	142	94 g6	6.5	33	80	M8	14	94	4
	CV10-TF1K	101.5	M10	142	75 H6	3	29	80	M8	14	94	4
	CV15-CV15	94	M10	142	108 g6	6.5	33	94	M10	14	108	4
	CV15-TF1K	101.5	M10	142	75 H6	3	29	94	M10	14	108	4