

After Sales

■ Maintenance and Repair

Even a health enthusiast can roughly judge his/her body condition on the day. However, complete health condition cannot be known without medical help. For the testing devices, each component gets worn little by little as tests are repeated. And oil used to prevent wear as little as possible also gets worn and deteriorated according to frequency of use and elapsed time. Because testing machines don't have self-healing abilities, knowing the machine condition by periodic maintenance can maintain the best condition.

In order to have accurate data acquisition with testing devices, periodic maintenance is necessary.



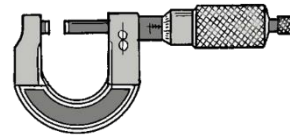
■ Manufacturer maintenance - merit for customer

- We manage maintenance record.
Organize and manage the documents for repair history, trouble history, remodeling history.
Incident for the maintenance section can be reduced.
- Prevention for breakdown
Preventive measure Tendency management to minimize accidents and troubles.
- Professional work
There will be no trouble after overhaul because skilled engineers conduct work.
Test can be conducted free from anxiety after overhaul.
- Maintaining measurement accuracy
Static torque accuracy is back to within $\pm 0.5\%$ FS after overhaul.
Therefore accurate testing data can be measured.
- Restored to the condition as good as new
Products can be used free from anxiety for 7000 hours or 5 to 7 years by the next maintenance time.
* Maintenance cycle may vary according to the customers frequency of use.
- Extension of warranty period
Warranty period extends another year after delivery if overhaul is conducted.



■ Maintenance items

- ① Exchange bearing for rotating part and grease-up
- ② Exchange and supply oil to lubrication part
- ③ Measuring coupling centering runout and face runout
- ④ Correction of shaft balance
- ⑤ Exchange and correction of bearing part
- ⑥ Exchange and correction of seal part
- ⑦ Check and correction of electric component
- ⑧ Total inspection, correction and exchange of connector and cable
- ⑨ Torque and load calibration work (also available for temperature, pressure, speed)
- ⑩ Retightening bolts
- ⑪ Cleaning and repainting
- ⑫ Calibration inspection and commissioning inspection



■ Overhaul inspection report

We take pictures of, check and inspect all the bolts in detail after disassembly. We are confident of our clear report to make customers satisfied.

* Actual report is attached with notes and pictures with arrows to concerned parts.



■ Suggestion to Maintenance Plan

Our testing device can be used for more than 20 years with periodic maintenance. We offer customers appropriate maintenance plans according to frequency of use and operation time. Please don't hesitate to contact us for planning phase of installation, running cost and maintenance.



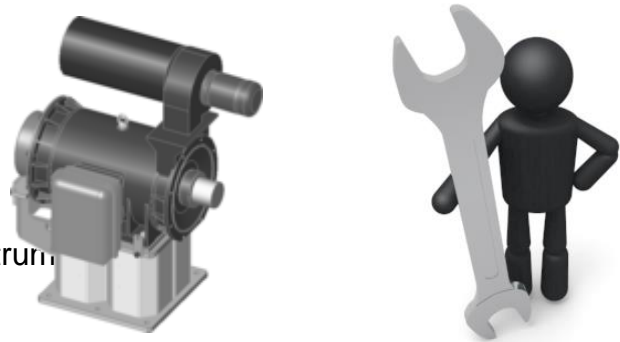
■ For safety use

Serious injury or fatal accident may occur due to scattering of rotation parts if you neglect daily, monthly and yearly checkups of product. Also correct measured data is necessary for customer's application development, experiment and inspection. When testing device is aged, it can't maintain high accuracy to acquire correct data.

To prevent this, we strongly recommend customers to have yearly inspection.

■ Yearly visiting inspection items (example)

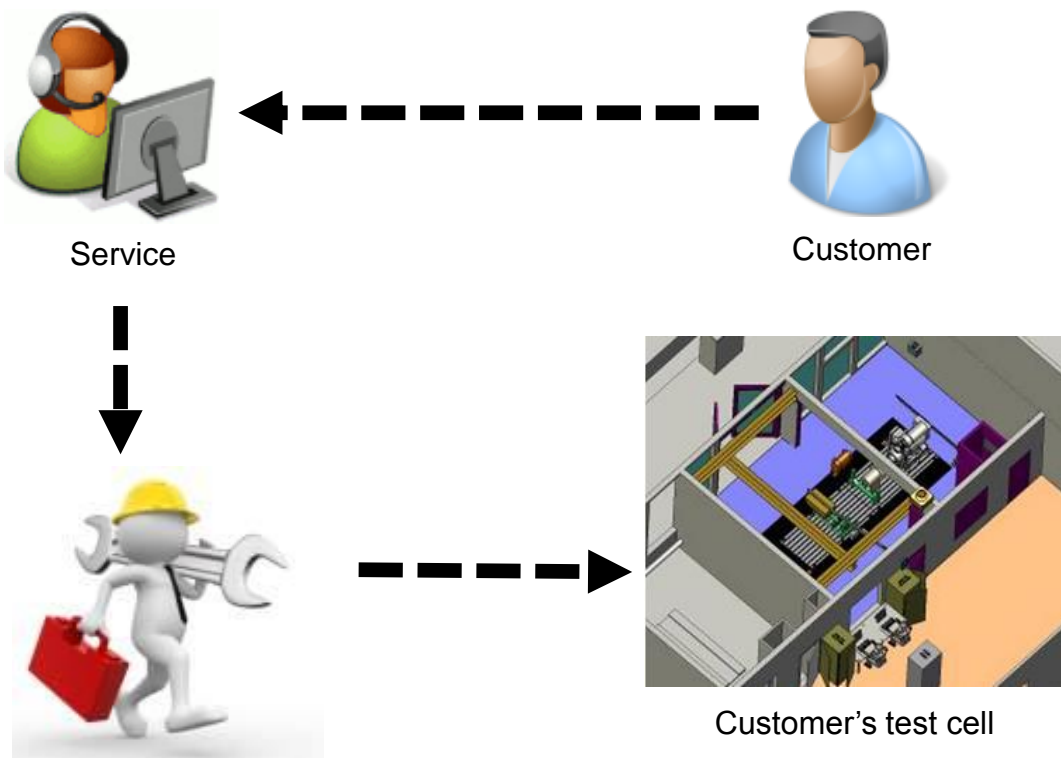
- ① Torque and load calibration work (also available for temperature, pressure, speed)
- ② Visual inspection
- ③ Replacing oil
- ④ Retightening bolts
- ⑤ Calibration of control measurement instrument
- ⑥ Trial operation check
- ⑦ Inspection certificate and report



■ Visiting inspection

Our engineers can visit domestic and overseas customer sites upon customers request.

* Additional charge applies.



■ Spare parts

We sell spare parts to customers who maintain our products by themselves.



○ How to inquire

Please provide us product model and manufacturing number. (e.g. Hydraulic dynamometer P-55A, XXXX (4-digit of manufacturing number is engraved on the product nameplate.) And please inform us part names. If you are not sure of part names, please refer to a cross section drawing that we will send.

■ Rental and Refurbished Products

○ Reduce initial cost

Rental and rebuild products are available to meet customers request.

【Customers' specific needs】

- Need a dynamometer immediately for urgent schedule.
- Budget is not fully acquired.
- Want to include in deductible expenses without capitalizing assets.

○ Rental

The longest period of 2 years

Stock: Please contact us for models and stock.

○ Refurbished products

Fully overhauled product (as good as new)

Warranty period of 1 year

* Coupling flange and frame need to be newly manufactured.

○ Calibration Certificate

We provide calibration certificate for dynamometers needed for ISO.

* Please contact us for further information.

【Contact】

Sales Group, Tokyo Plant Co., Ltd.

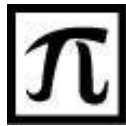
515-5 Miyazawa-cho, Akishima-city, Tokyo 196-0024

TEL: +81-(0)42-546-6500 FAX: +81-(0)42-546-6600

URL: www.tokyo-plant.co.jp

E-mail: sales@tokyo-plant.co.jp





Since 1948