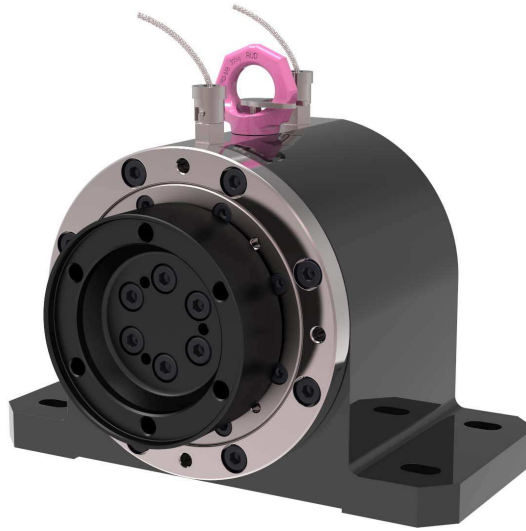


tZLE200

STANDARD INTERMEDIATE BEARING



DESCRIPTION

The tZLE200 bears the support loads, thereby reducing the loading on the rest of the test bed. The high quality bearings used guarantee precise running. The exchangeable adapters of the tZLE200 allow direct coupling of multiple shaft types from the t700 series, and couplings from the t600 and t1000 series, without further adaptation. The modular design allows the intermediate bearing to be tailored to individual customer requirements.

NAMING

The product is named according to the following convention:

tZLE200-CVxx
 └──────────┬──────────┘
 product name joint size

Example: tZLE200-CV15

OPERATING RANGE

Torque: up to 6600 Nm
 Speed: up to 8000 rpm

BENEFITS

- precise running
- reduced stress on unit under test and dynamometer
- exchangeable flanges for different CV-shaft sizes and coupling types
- permanently lubricated bearing
- integrated temperature measurement points



Exclusive Representative in Japan



TOKYO PLANT Co., Ltd.

東京プラント株式会社

515-5 Miyazawa-cho, Akishima city, Tokyo, Japan 196-0024
 TEL: +81-42-546-6500 FAX: +81-42-546-6600
 Email: sales@tokyo-plant.co.jp

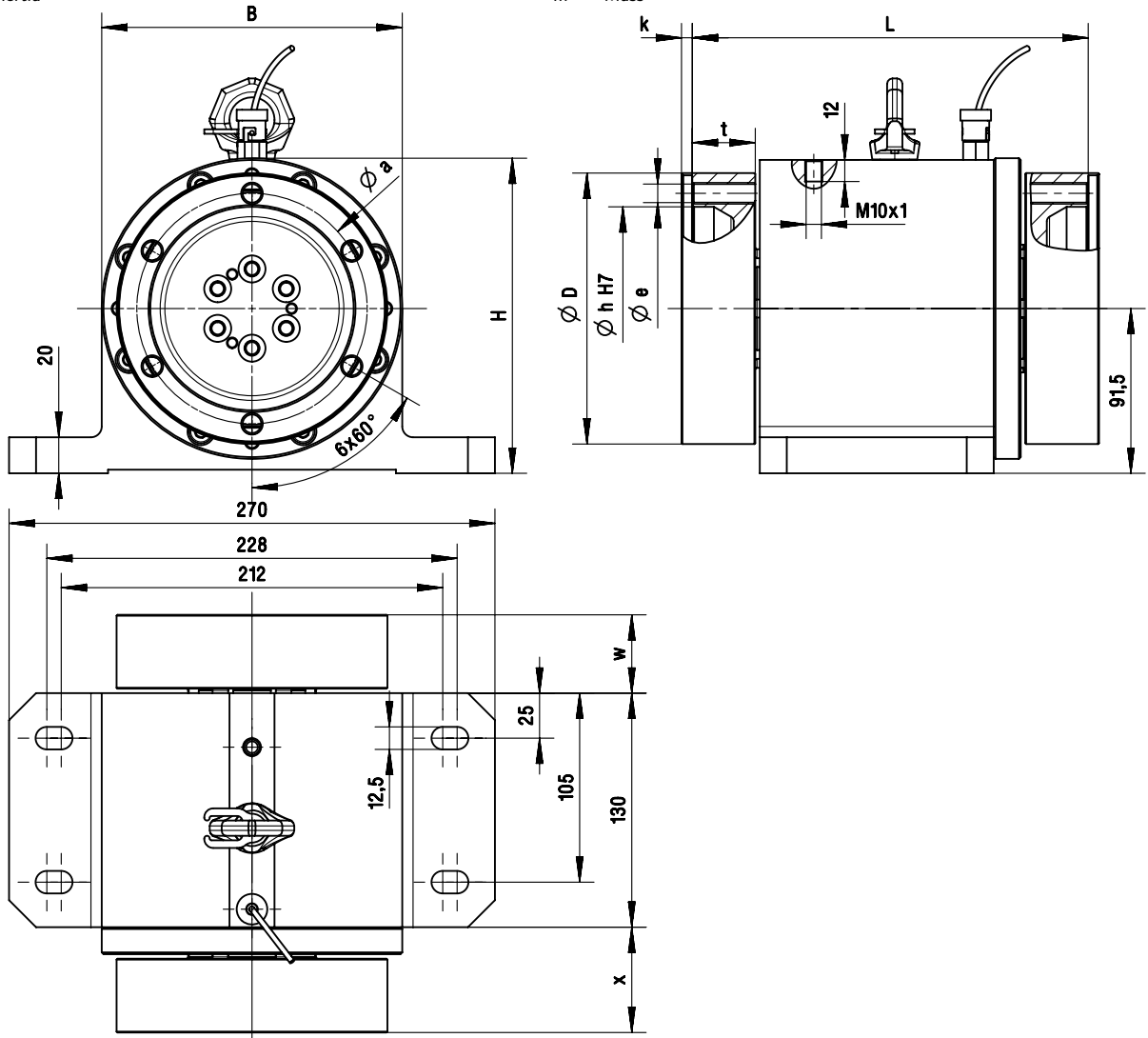
tZLE200

STANDARD INTERMEDIATE BEARING

Intermediate bearing	Joint	T _{max} [Nm]	n _{max} [rpm]	J [kgm ²]	m [kg]
tZLE200	CV05	1000	8000	6.18E-03	29.8
	CV10	1500	8000	7.04E-03	31.0
	CV15	2500	8000	1.01E-02	31.0
	CV21	3500	8000	1.81E-02	32.9
	CV30	6600	5000	2.65E-02	34.1

T_{max} - Maximum torque
J - Inertia

n_{max} - Maximum speed
m - Mass



Intermediate bearing	Joint	B	D	H	L	a	e	h (H7)	k	t	w	x
		[mm]	[mm]	[mm]	[mm]	[mm]	[-]	[mm]	[mm]	[mm]	[mm]	[mm]
tZLE200	CV05	167	90	174	212	74	M8	86	10.5	31	33.5	48.5
	CV10	167	97	174	212	80	M8	94	4.5	31	33.5	48.5
	CV15	167	113	174	212	94	M10	108	4.5	31	33.5	48.5
	CV21	167	134	174	218	108	M12	128	5.5	34	36.5	51.5
	CV30	167	154	174	224	128	M12	148	6.0	37	39.5	54.5

Other flange dimensions or mixed CV sizes available on request